

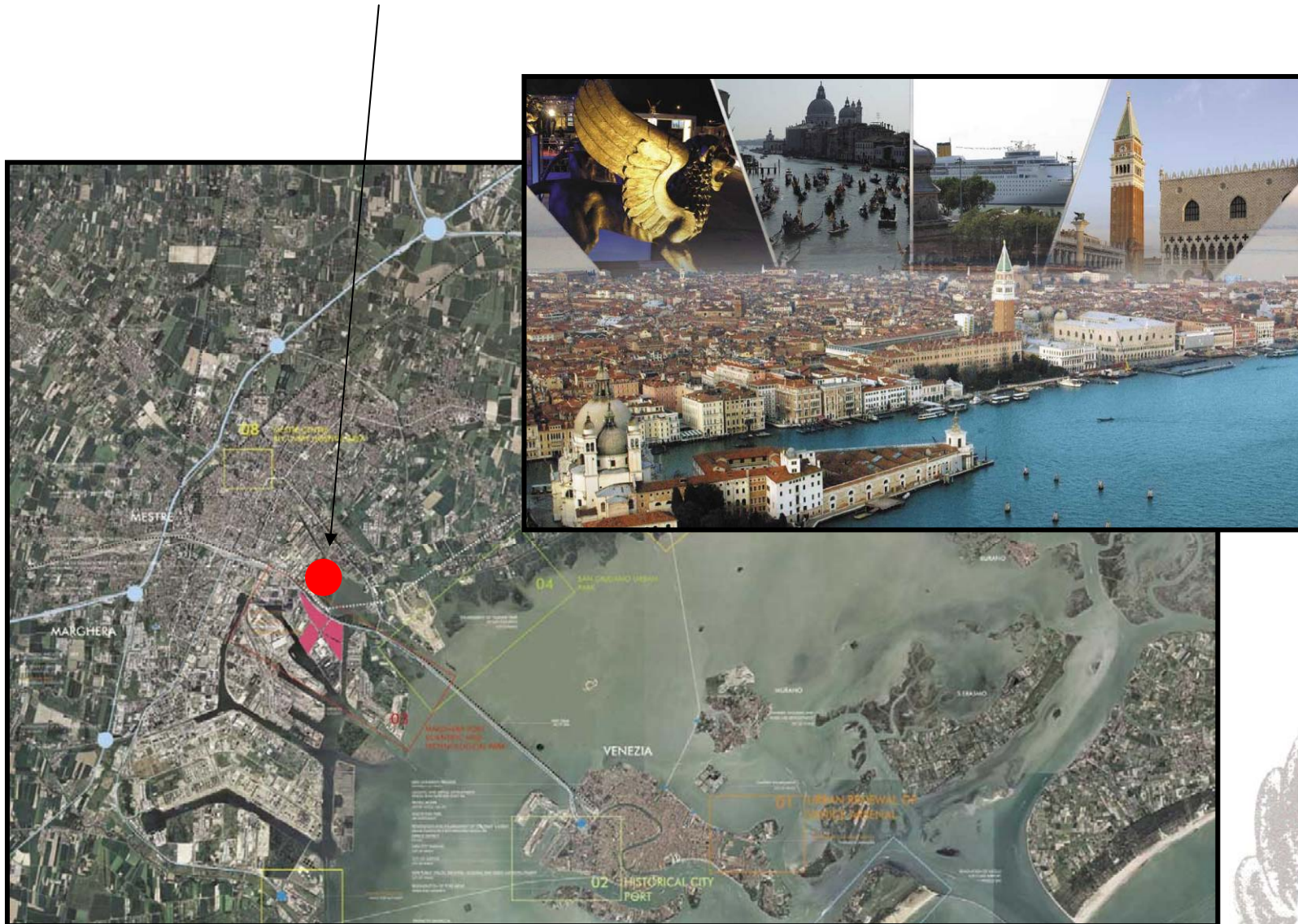
European Industrial Engineering



The power of creativity



European Industrial Engineering LOCATION



European Industrial Engineering is an engineering company founded in 1989 with the aim of developing activities in the industrial and scientific fields.

EIE organization is flexible and adaptable to the characteristics of each project because it is structured into divisions with specific and integrated professionalisms in order to operate from the specific specification to the final supply.

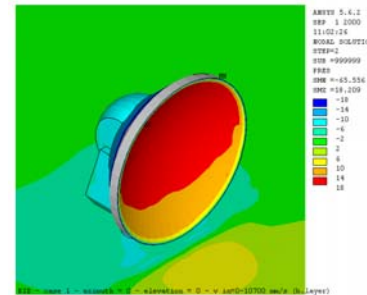
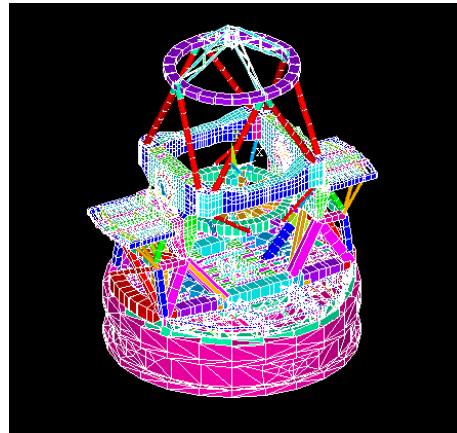
EIE works alongside the client, integrating the competencies through the use of consolidated management techniques and powerful engineering tools.

EIE verifies all the processes of project development and product realization according to the most updated techniques of "Product Assurance".



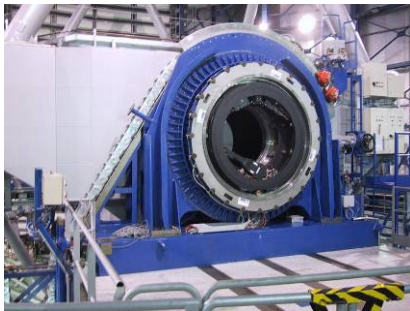
Structures Division

The potentiality of the structural calculation methods, along with the modal analyses also in the non-linear field, allow **EIE** to develop both simple industrial and civil building designs as well as complex structures in steel, reinforced concrete, composite materials, etc.



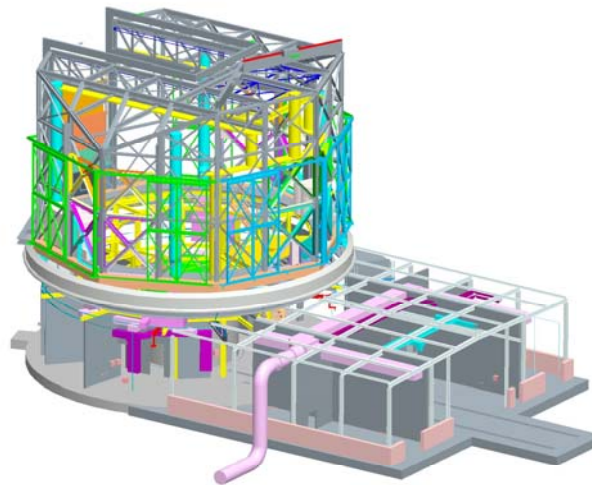
Mechatronics Division

EIE is capable of developing designs for machines as well as advance plants and systems. Its activities also include research and development of prototypes, the validity and reliability of which are tested right up to in-field operations.



Plants Division

In the field of systems **EIE** is involved in market research, the most up to date technological applications, experimentation, prototypes, turn-key installations, cost and reliability studies, design standard awareness as well as domestic and international regulations.

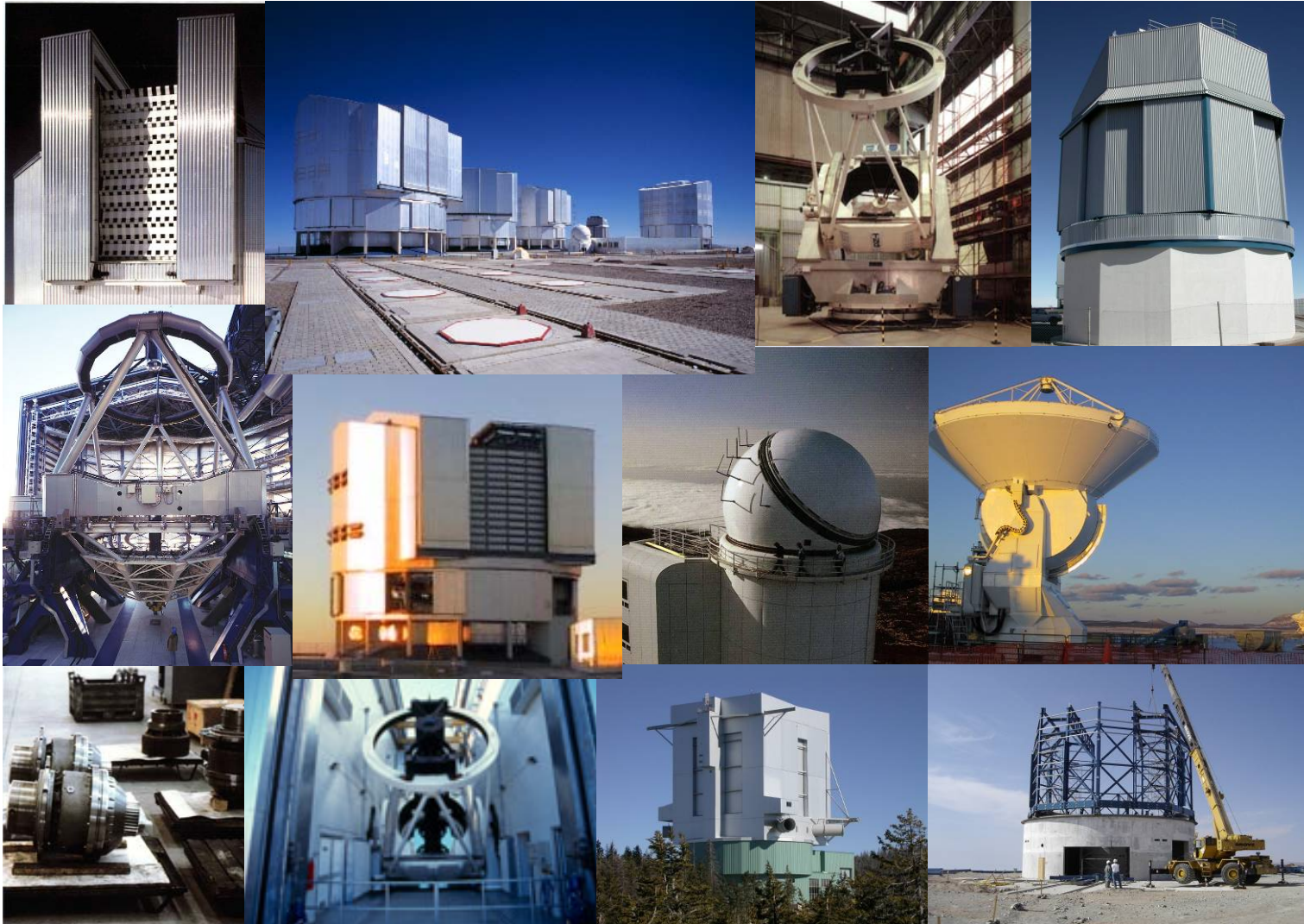


Special Products Division

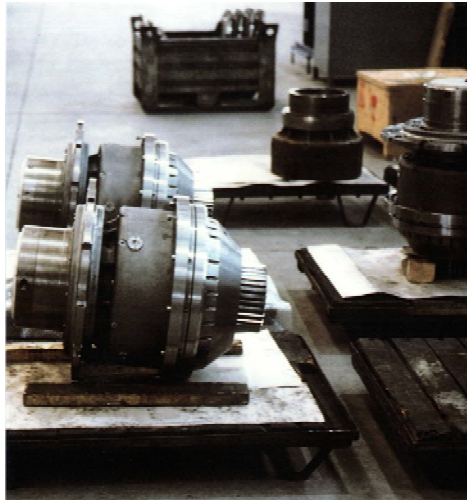
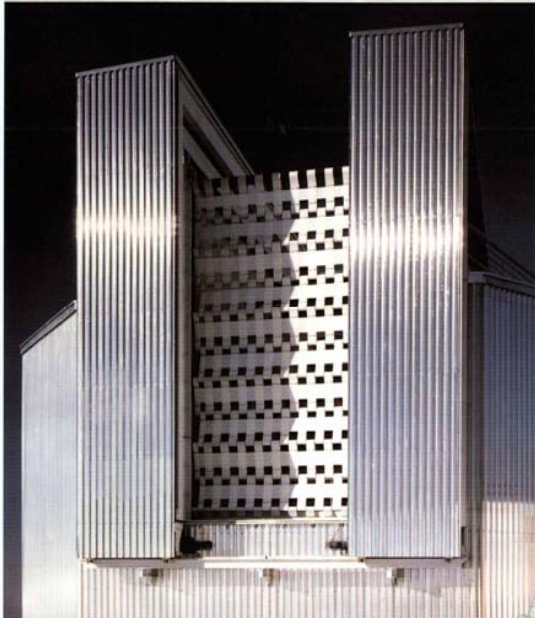
EIE' s special products activities entails: combining the experience acquired in the various areas of engineering with managerial abilities and system coordination, also via an international network of contacts and liaisons, so as to meet its customers' widest requirements.



EIE in the Astronomical Field



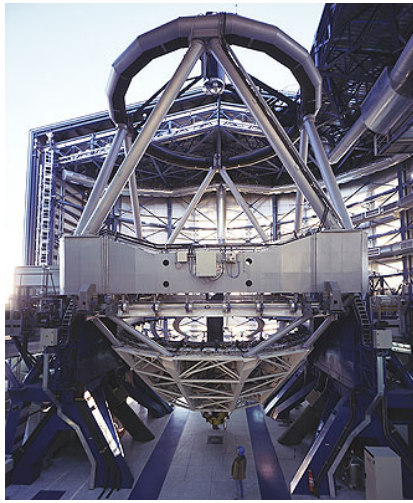
NTT Project



SPECIAL
PRODUCT
DIVISION



VLT Project

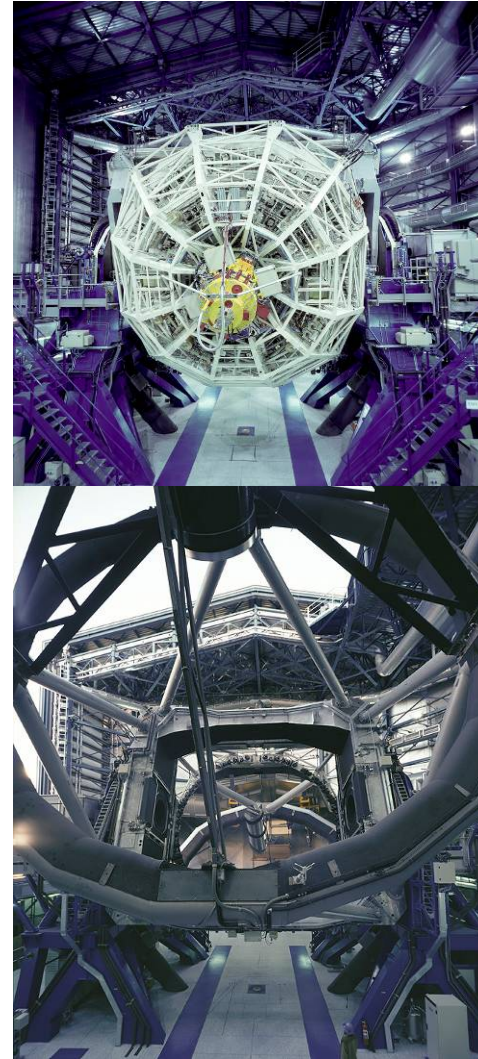
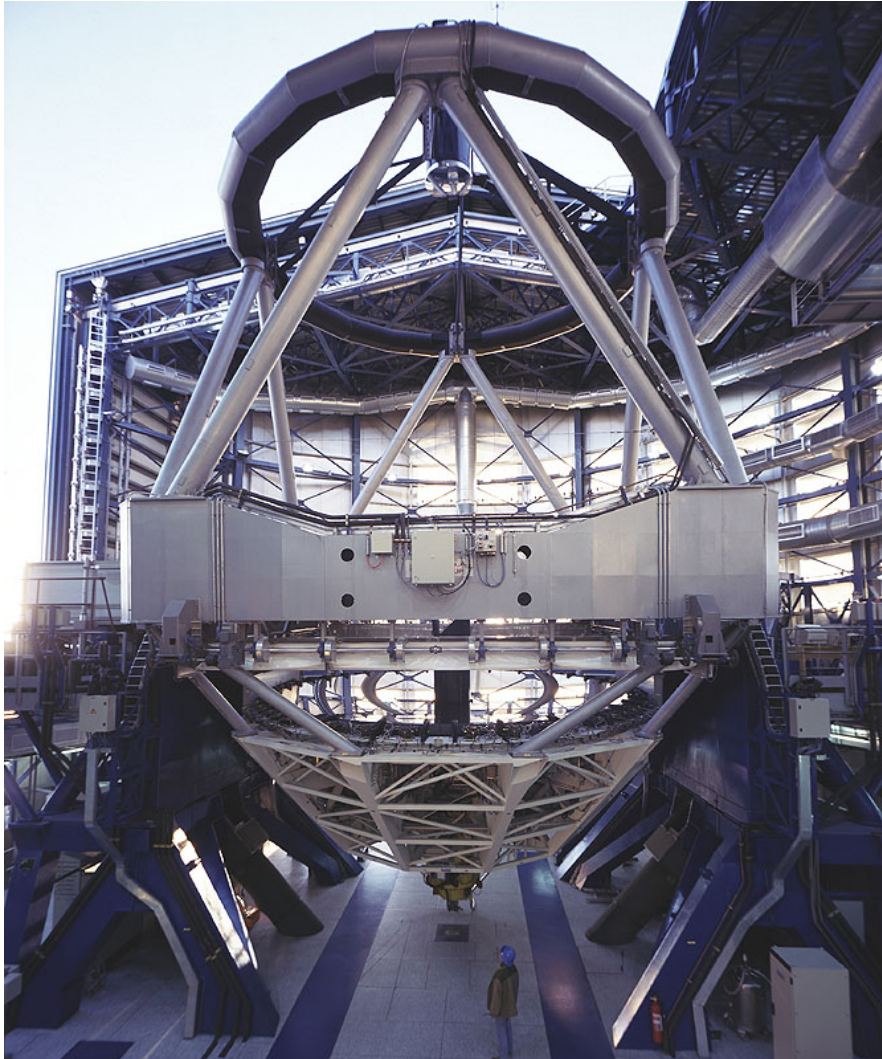


VLT Project – Erection Phase



SPECIAL
PRODUCT
DIVISION

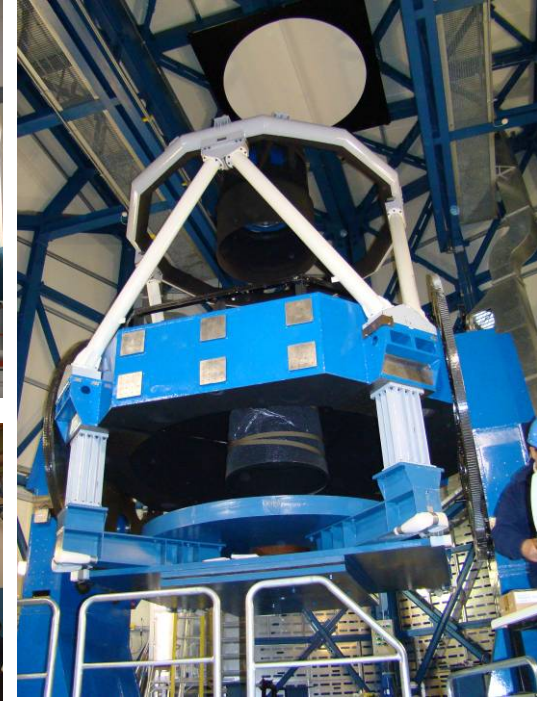
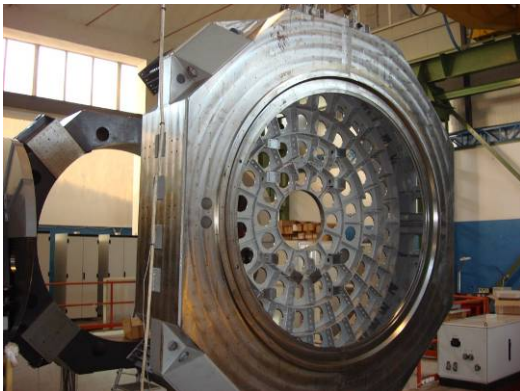
VLT Project – Erection Phase



VST Project – Erection Phase

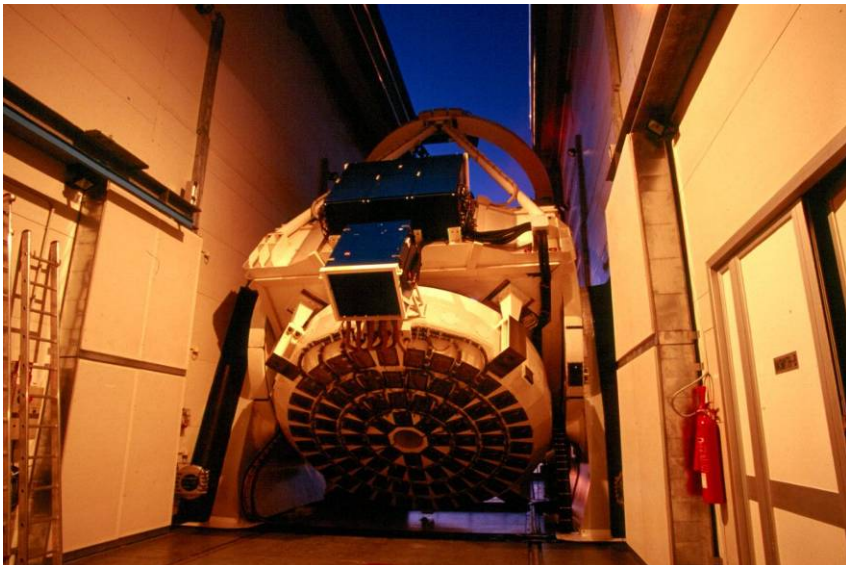
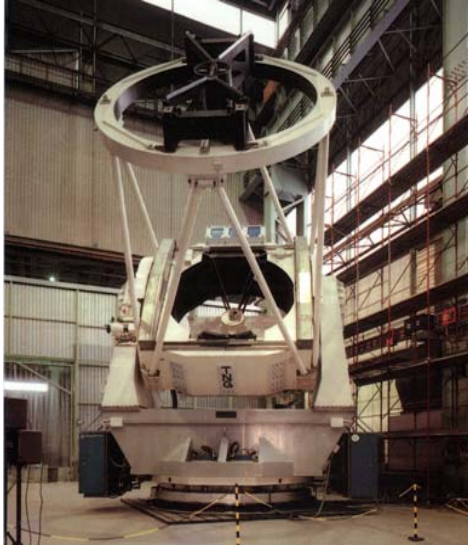


VST Project



SPECIAL
PRODUCT
DIVISION

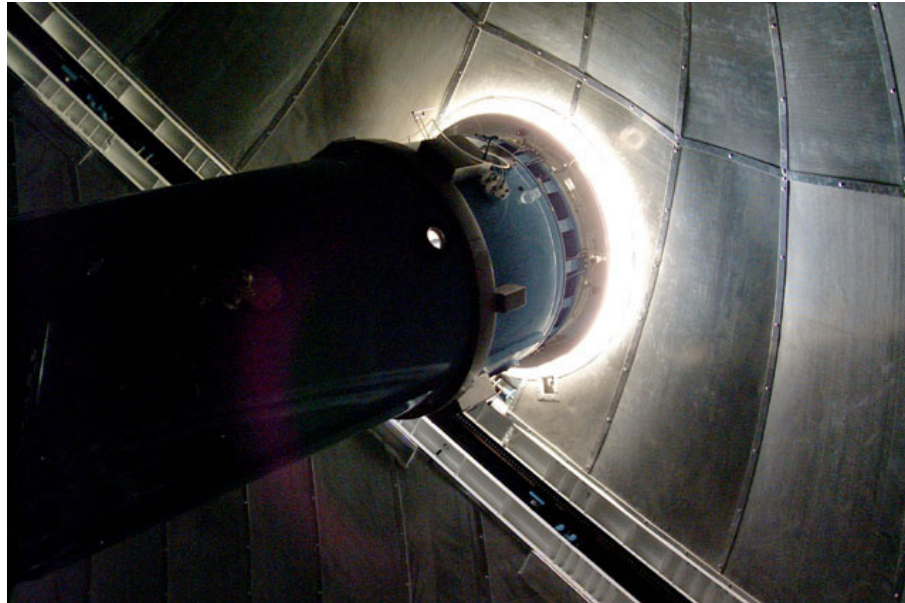
TNG Project



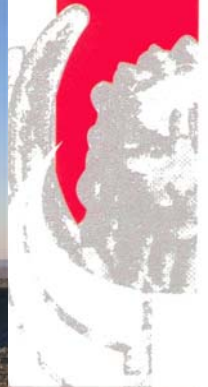
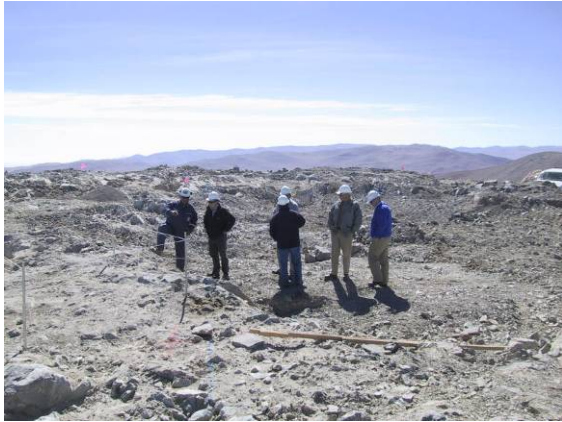
SPECIAL
PRODUCT
DIVISION



THEMIS Project



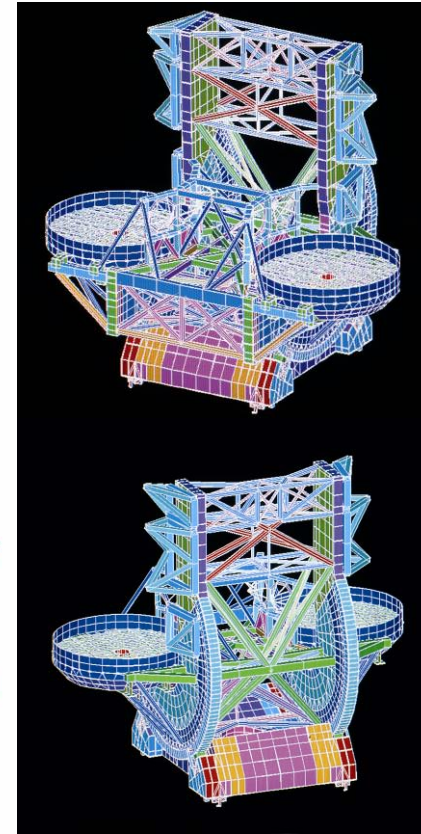
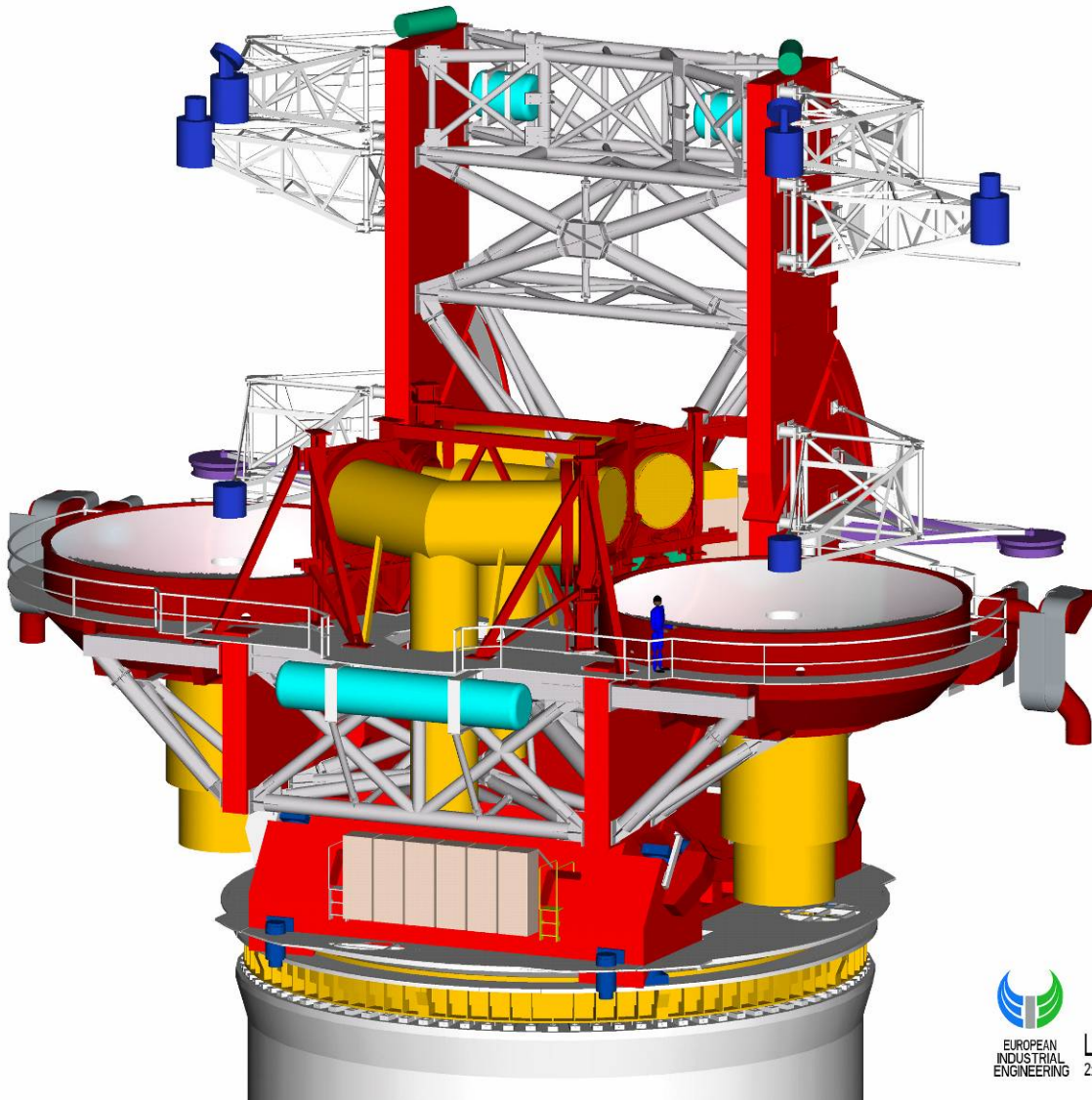
VISTA Project – Erection Phase



LBT Project



LBT Project: the Design



LBT Project: the Construction - 1



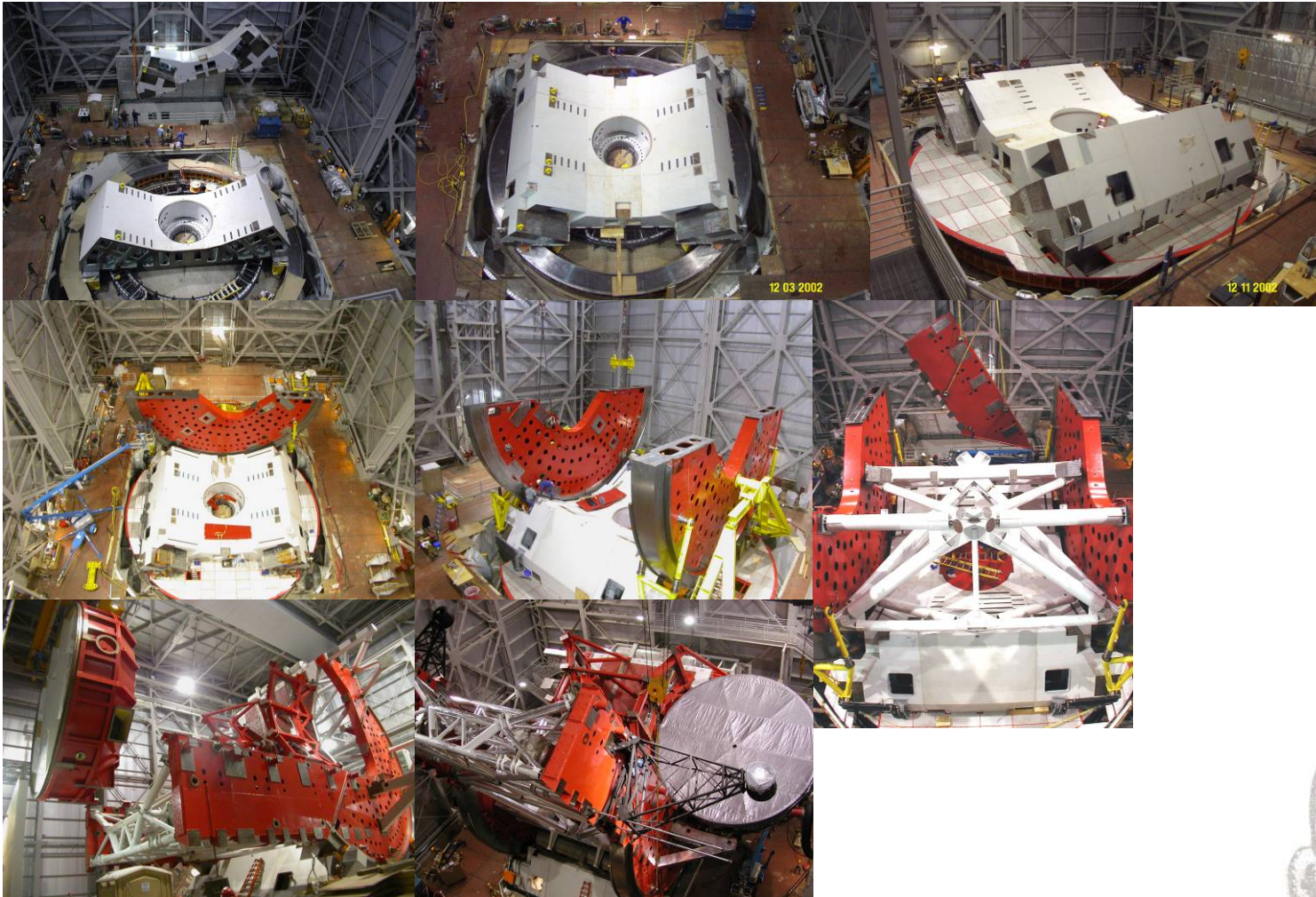
LBT Project: the Construction - 2



LBT Project: the Transport Engineering



LBT Project: the On Site Erection - 1



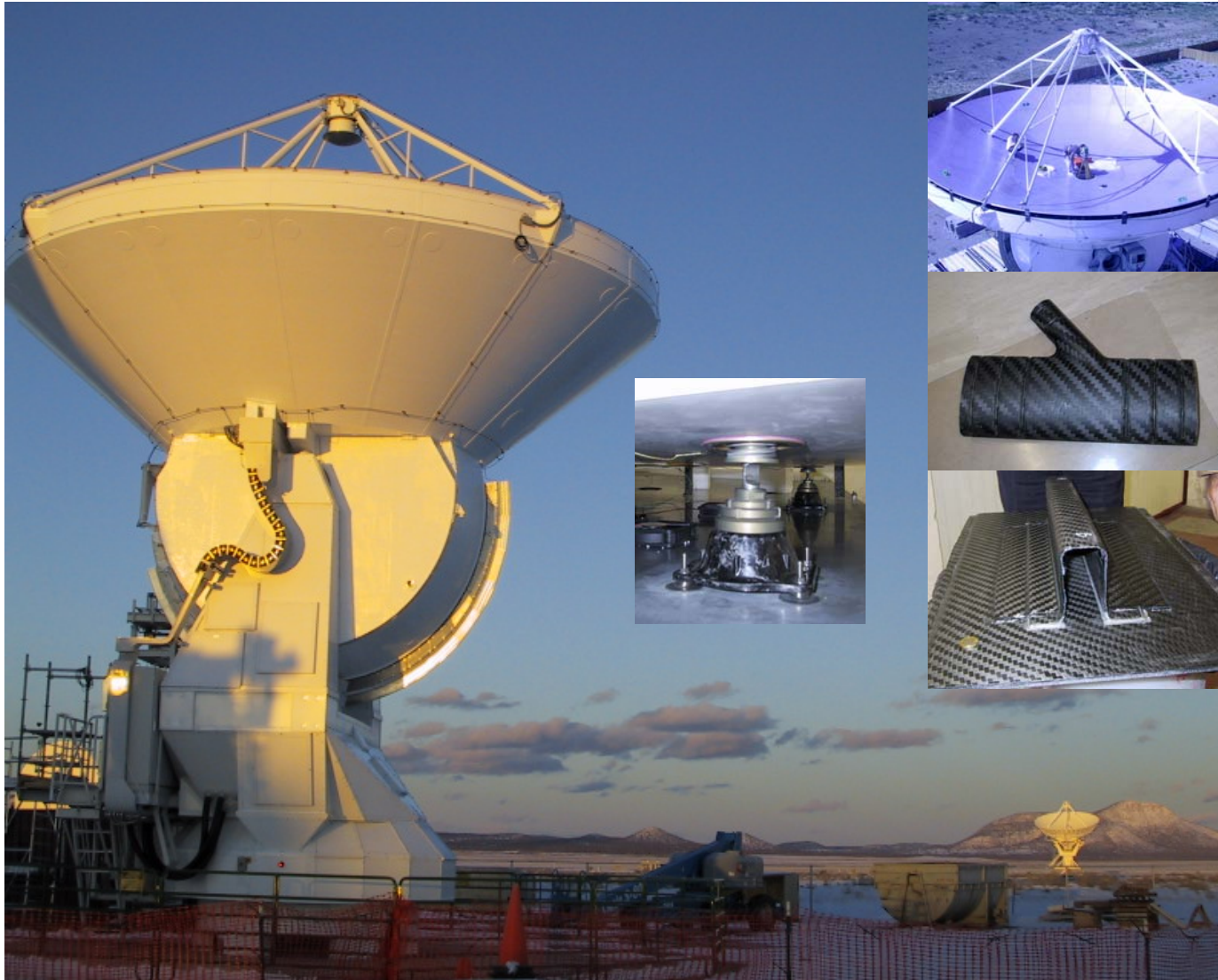
LBT Project: the On Site Erection - 2



LBT Project: the On Site Erection - 3



ALMA Project



SPECIAL
PRODUCT
DIVISION



ALMA Project: the Steel Structures



ALMA Project: the CFRP Structures



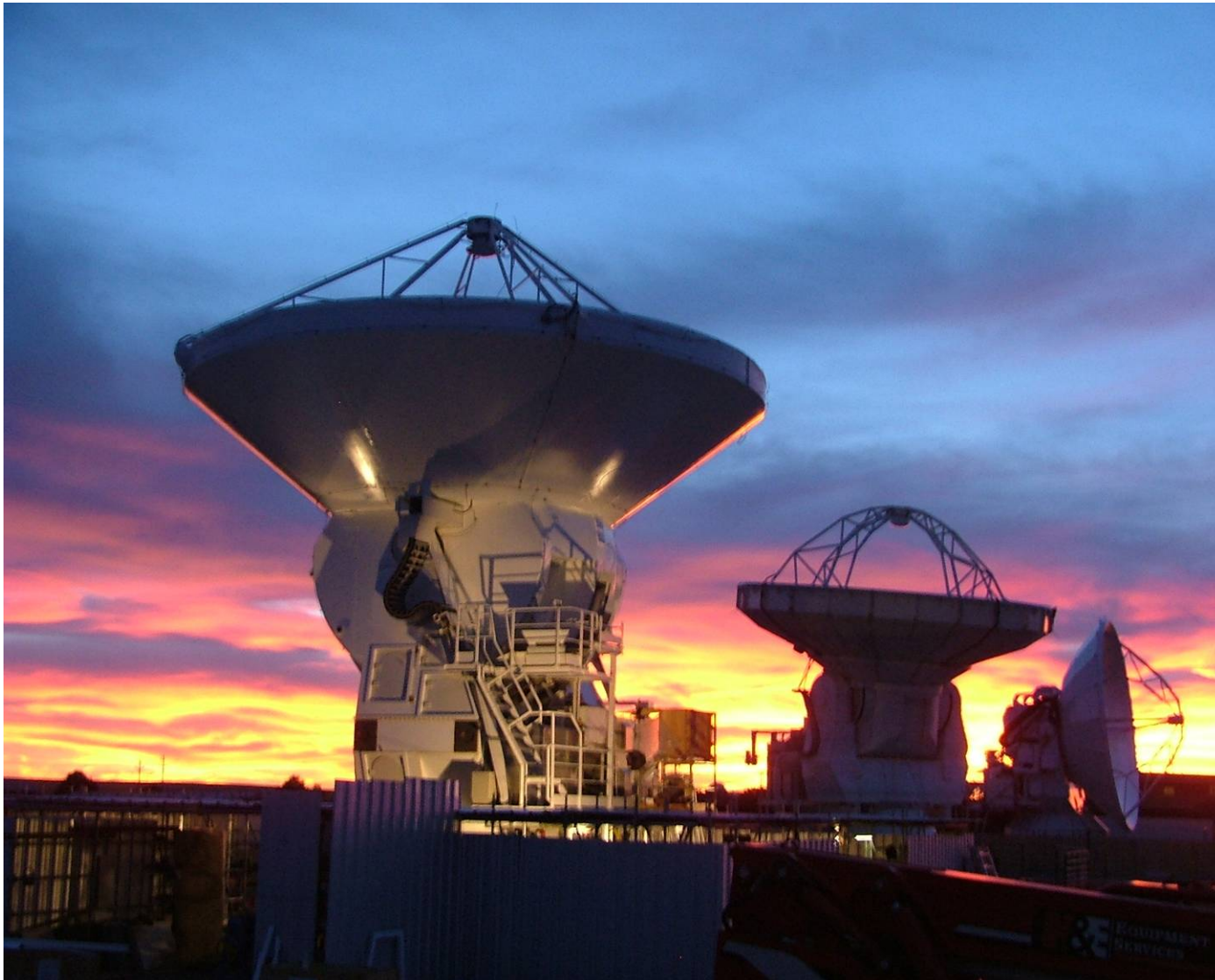
ALMA Project: Handling & Transport



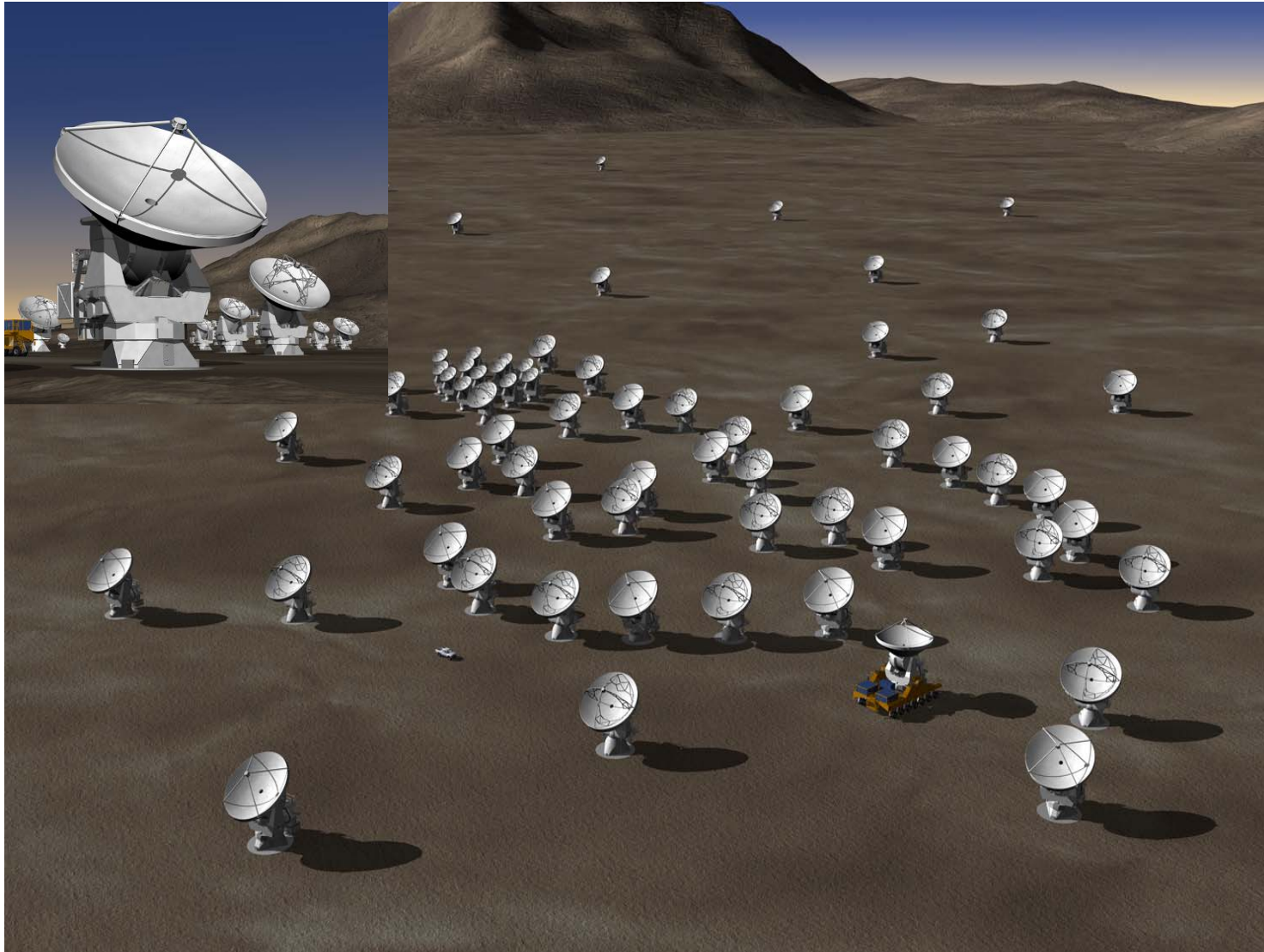
ALMA Project: On Site Erection



ALMA Project: the Prototype Antennas



ALMA Project: the Antennas Production



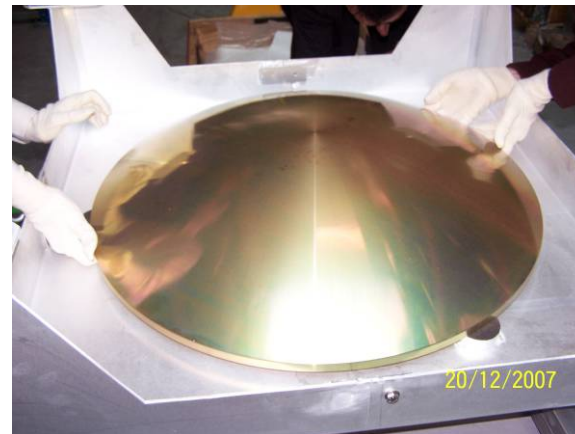
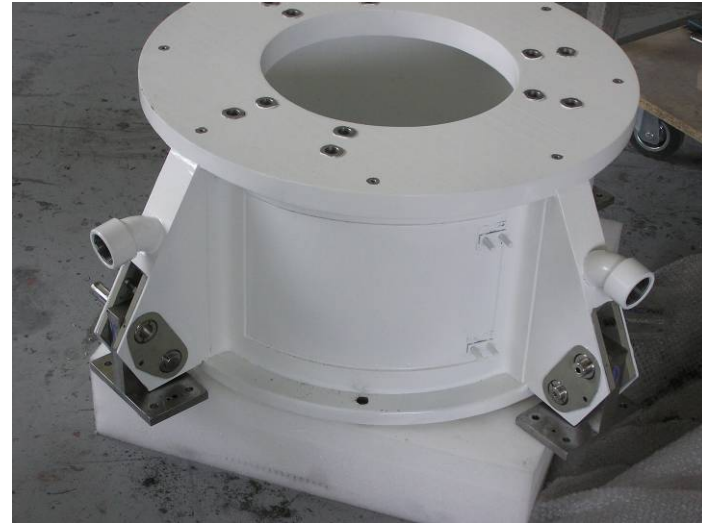
ALMA Project: the Antennas Production



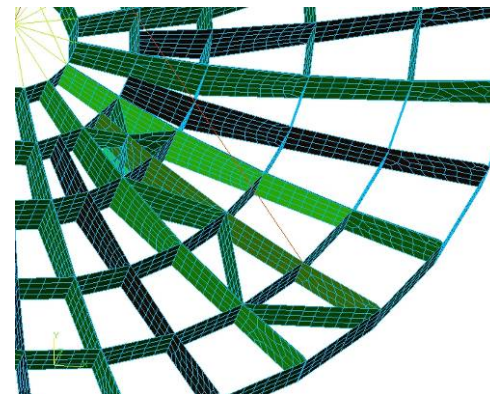
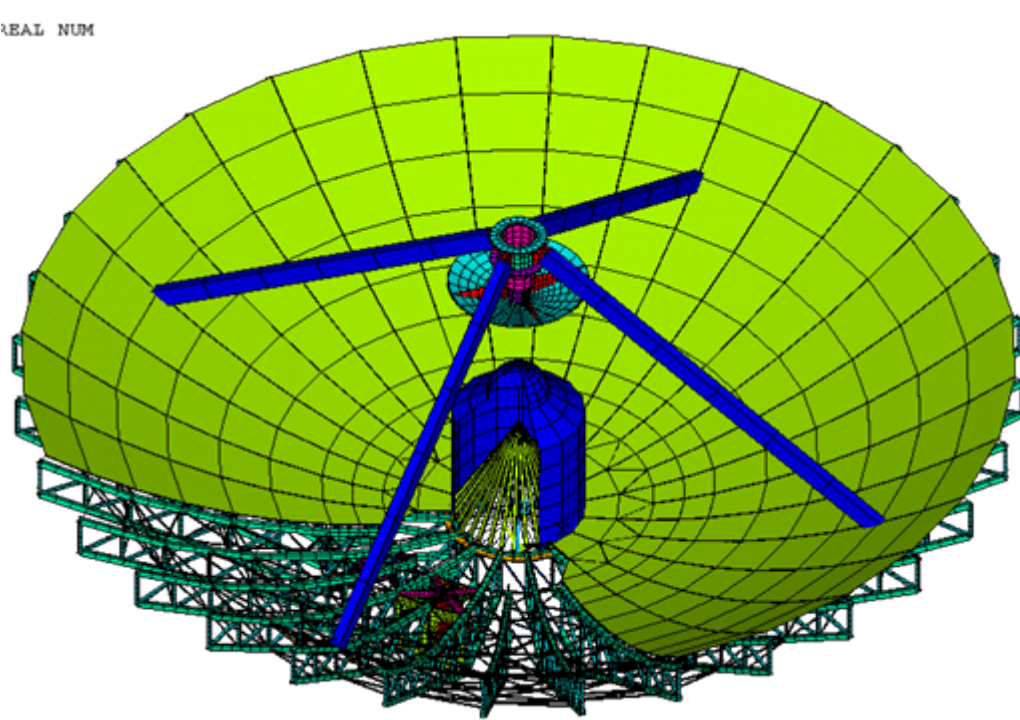
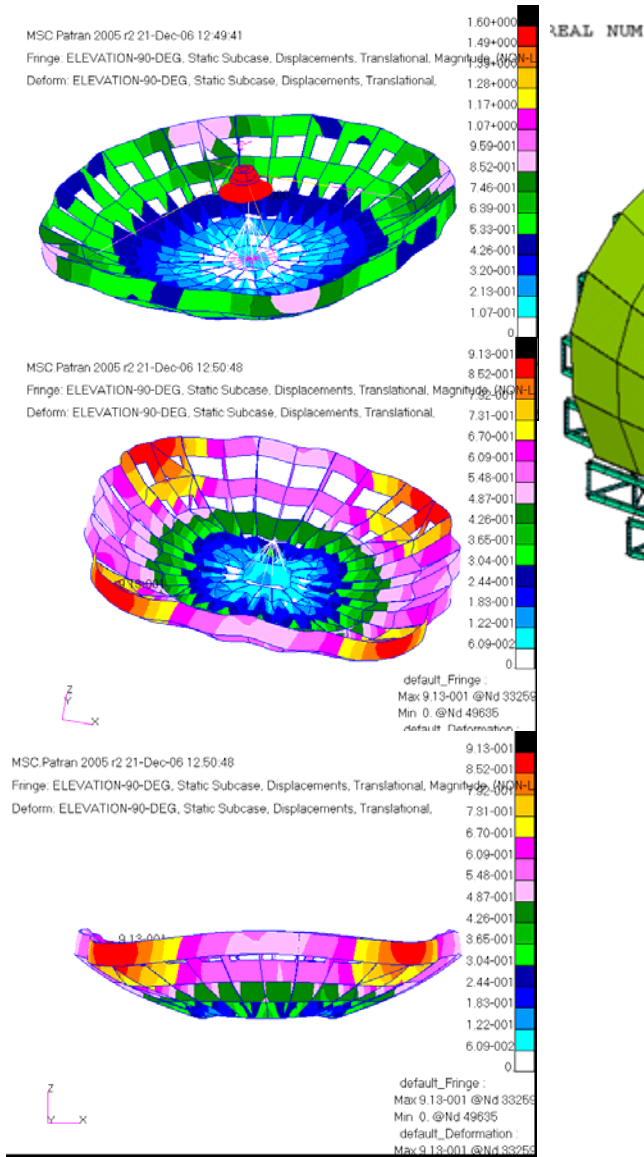
SPECIAL
PRODUCT
DIVISION



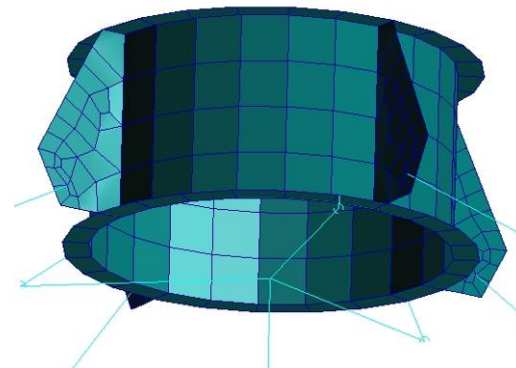
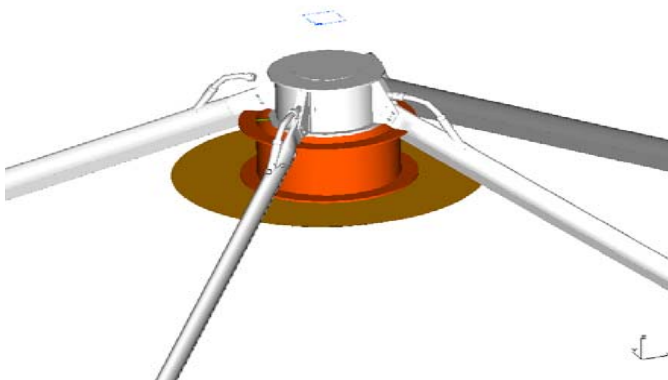
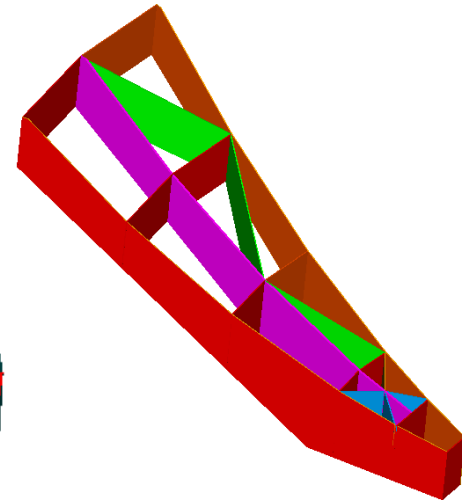
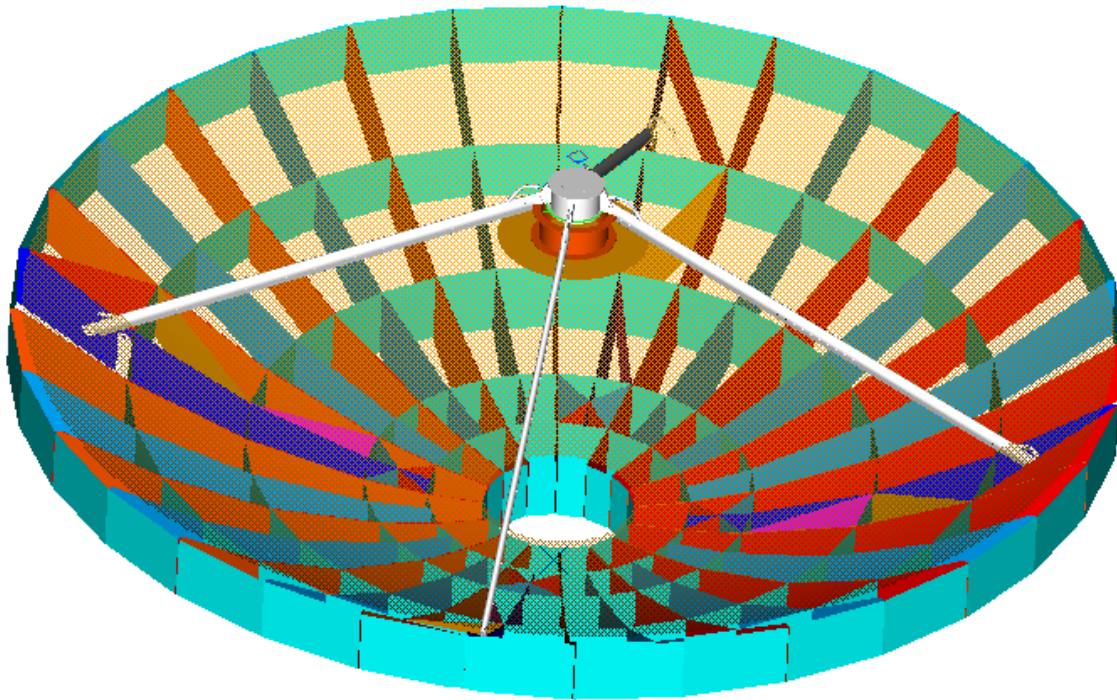
ALMA Project: the Antennas Production



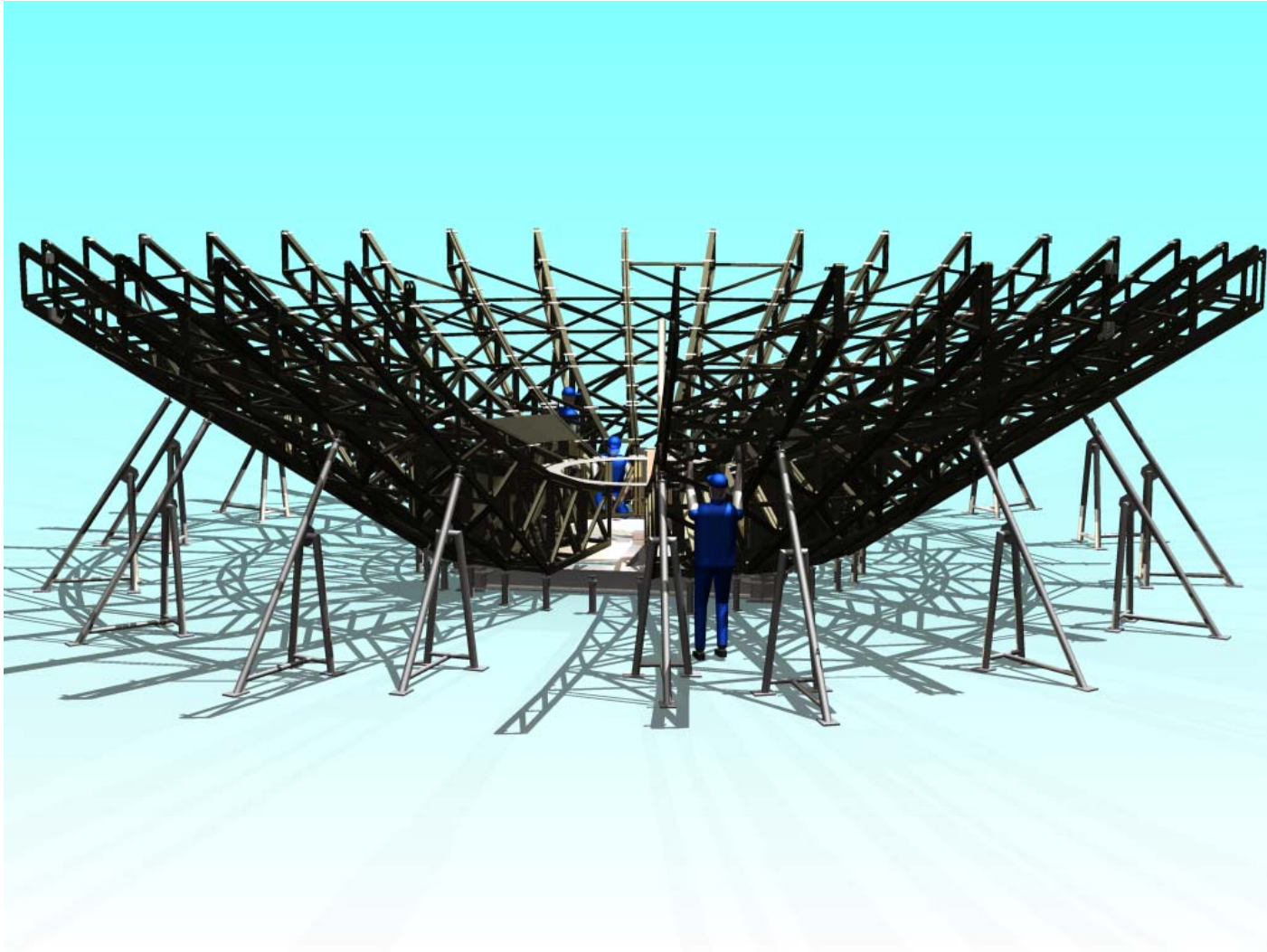
NORMANDIA Project: Design Phase



NORMANDIA Project: Design Phase



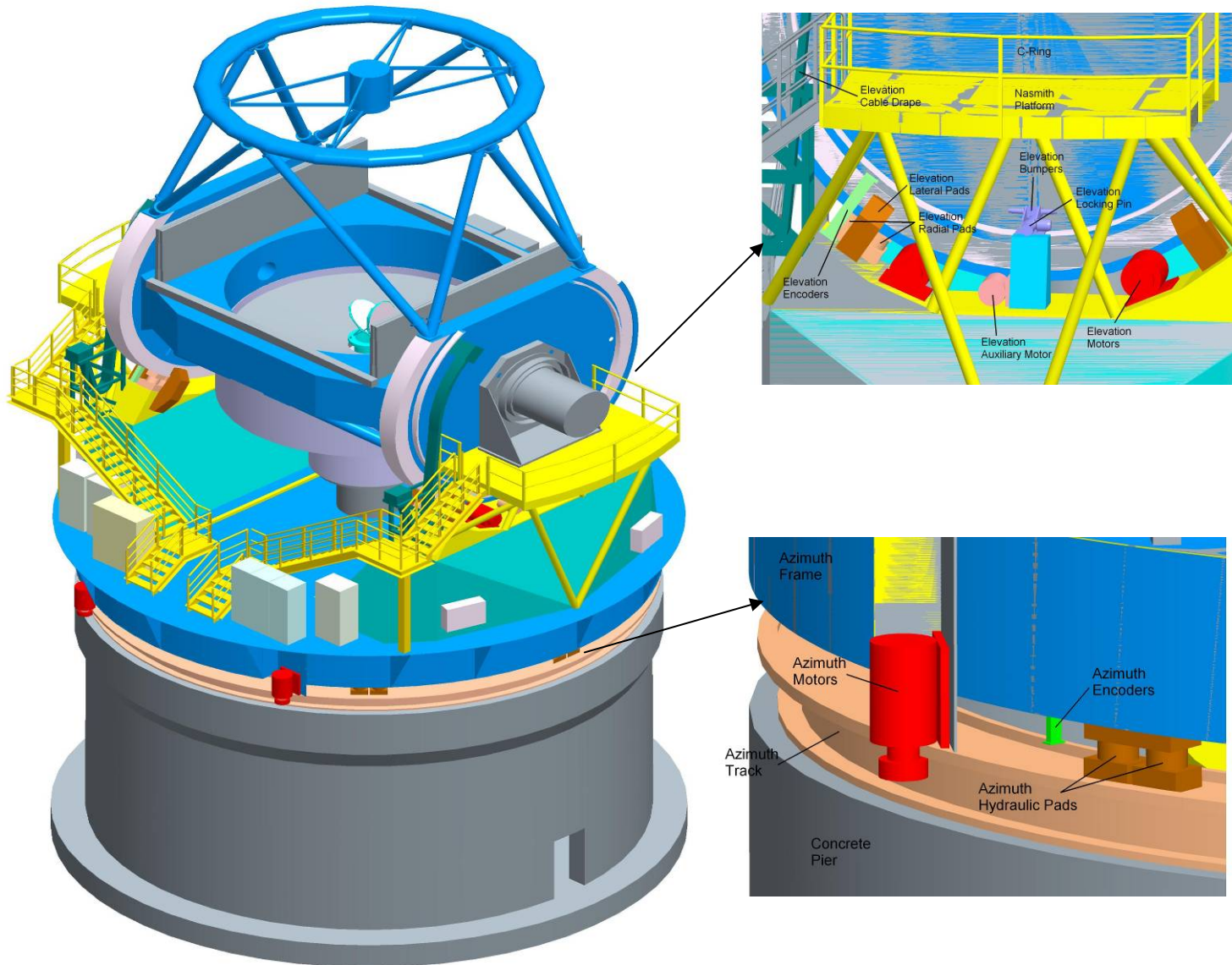
NORMANDIA Project: Design Phase



NORMANDIA Project: Manufacturing Phase



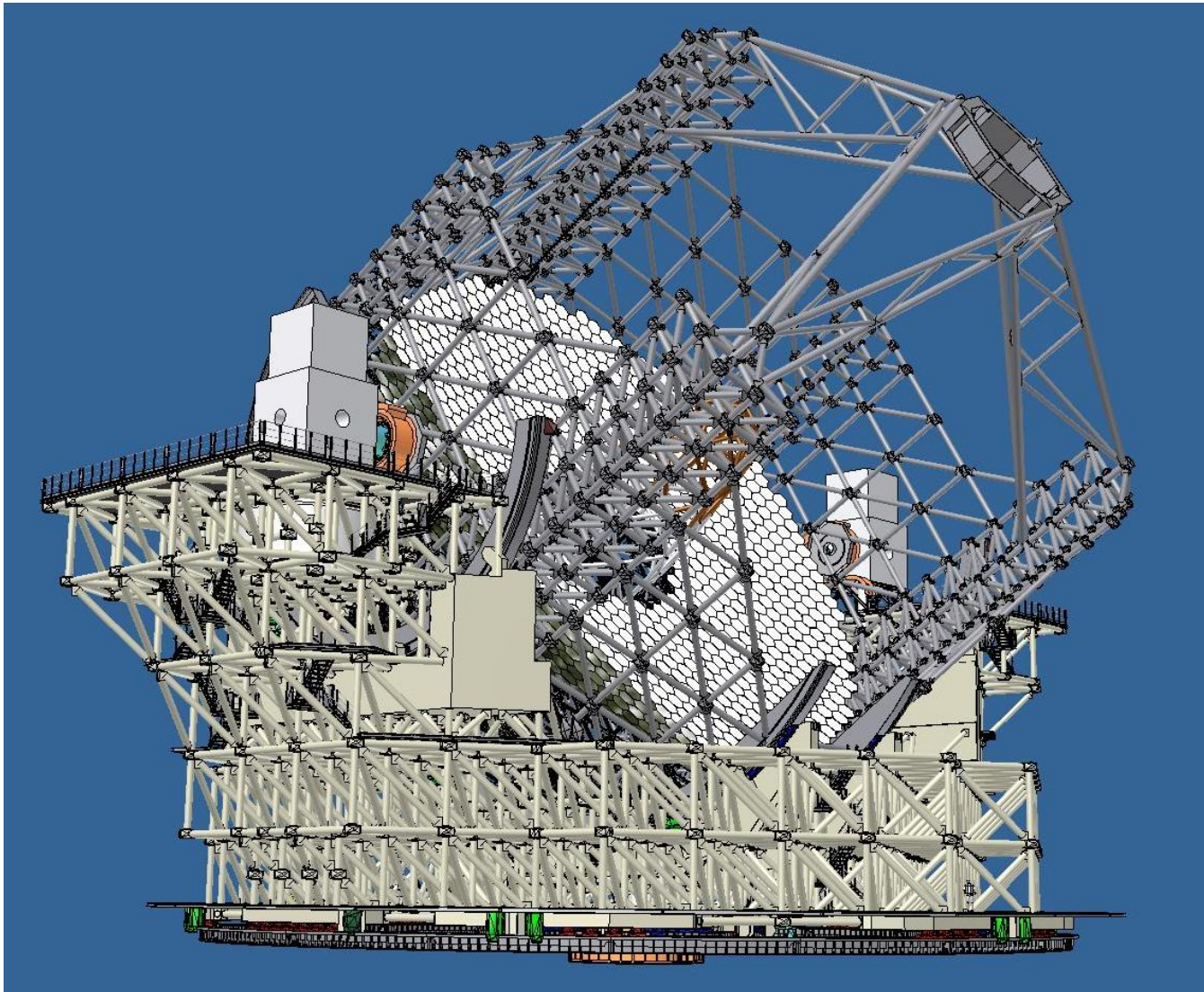
TAO Project: Design Phase



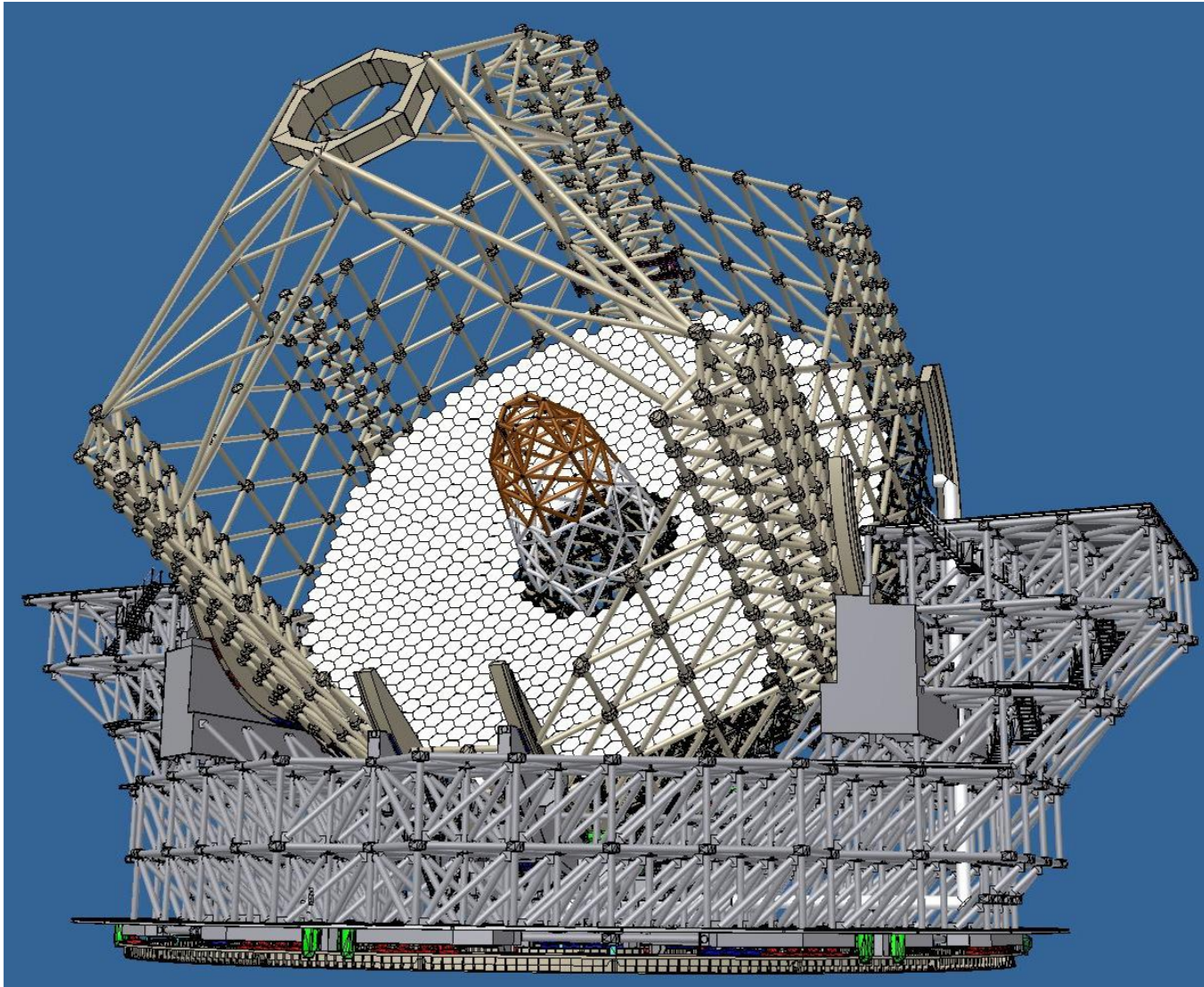
SPECIAL
PRODUCT
DIVISION



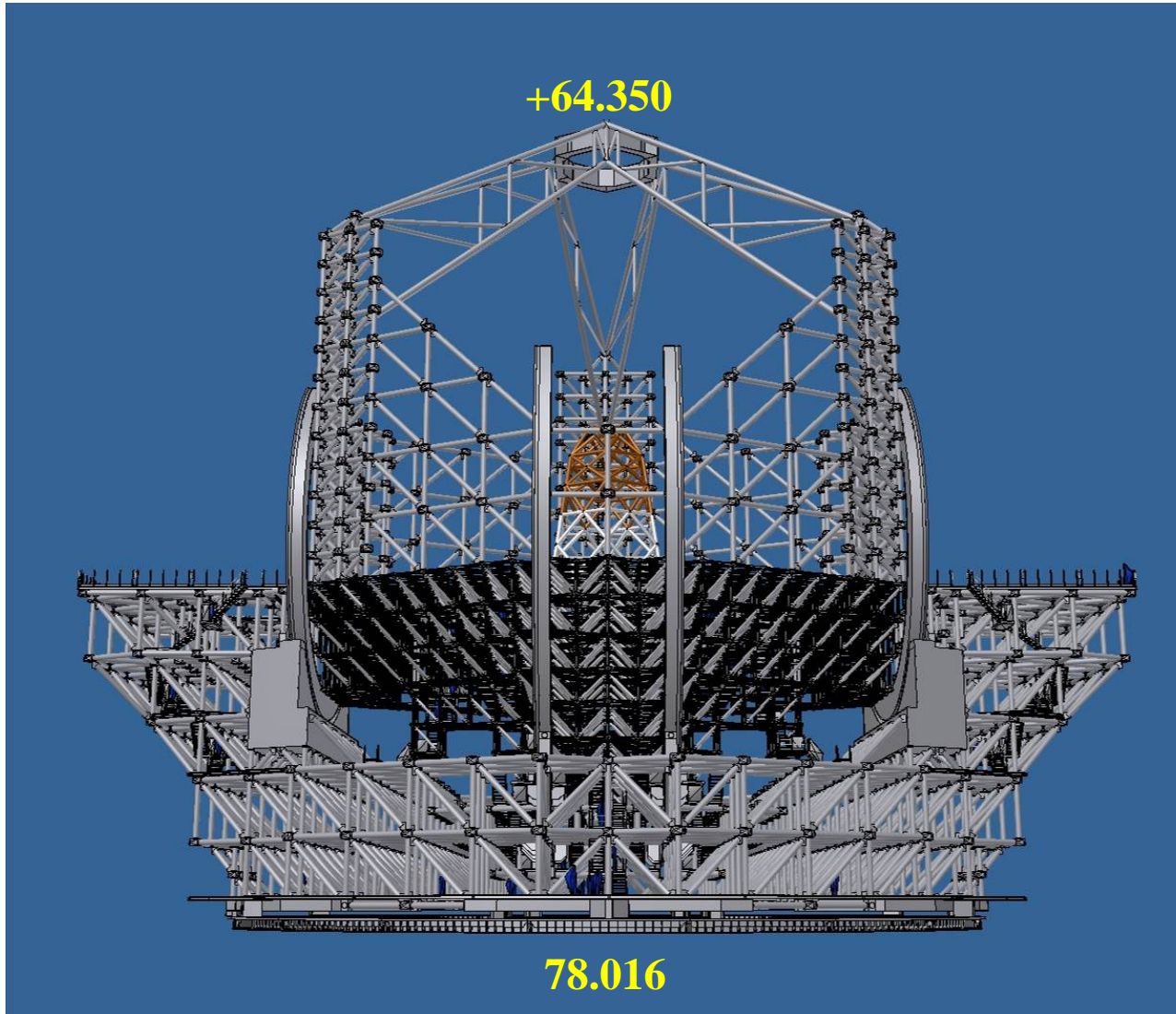
E-ELT Project: Preliminary design Phase



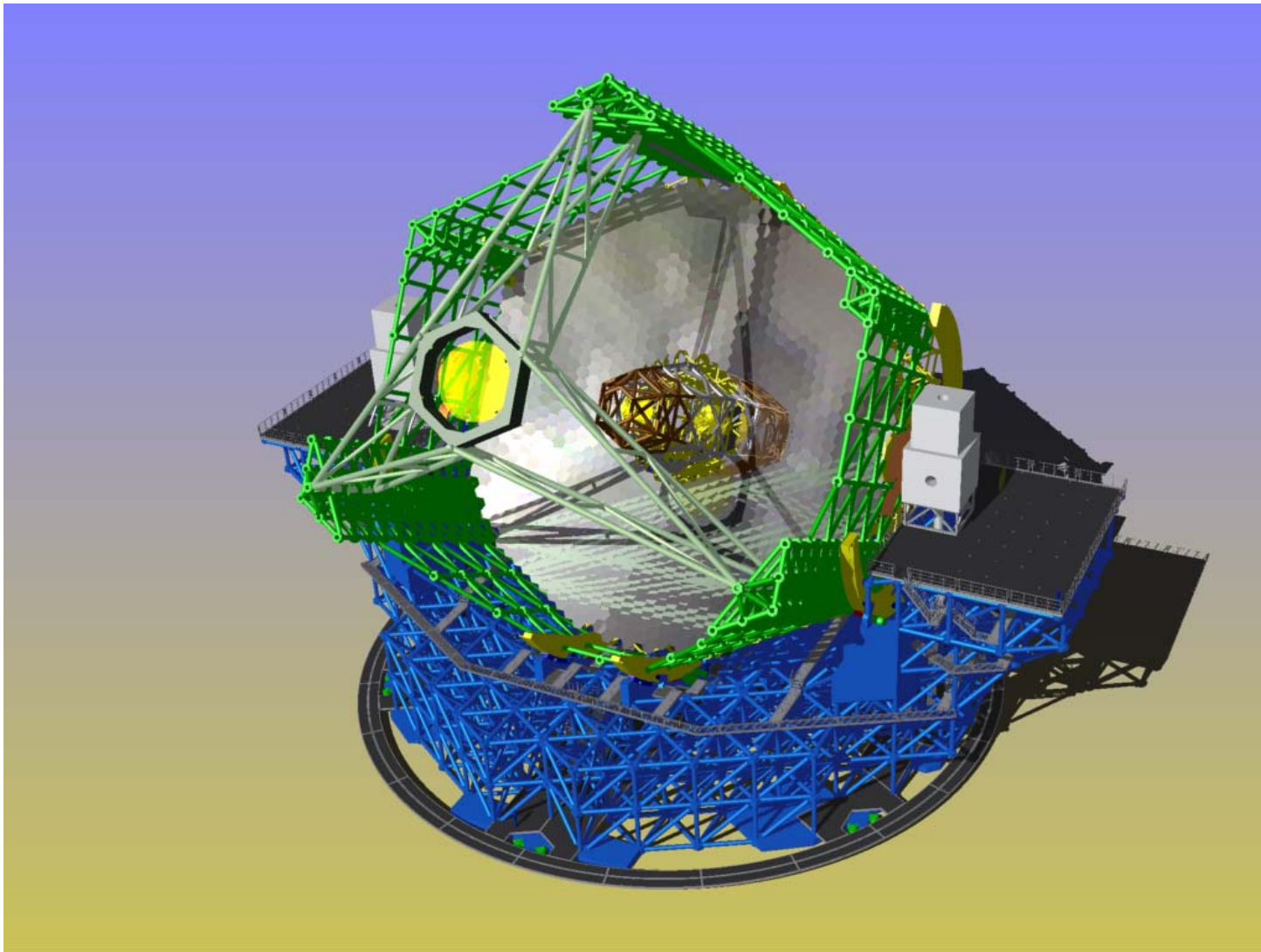
E-ELT Project: Preliminary design Phase



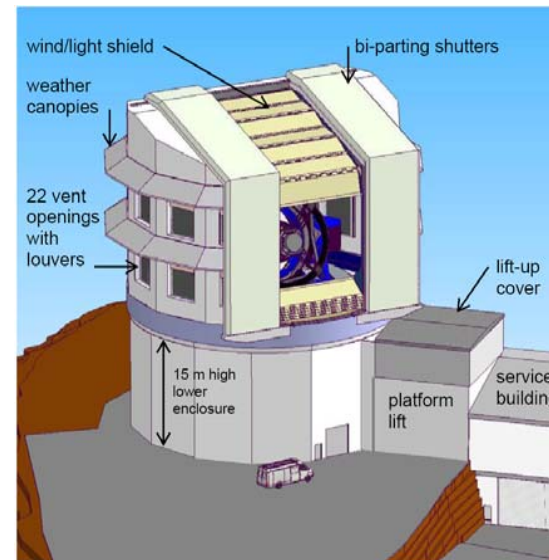
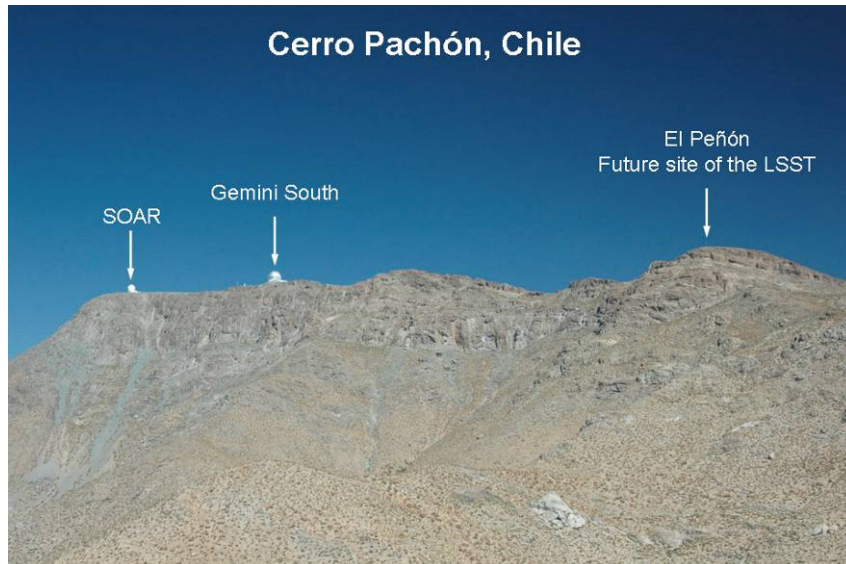
E-ELT Project: Preliminary design Phase



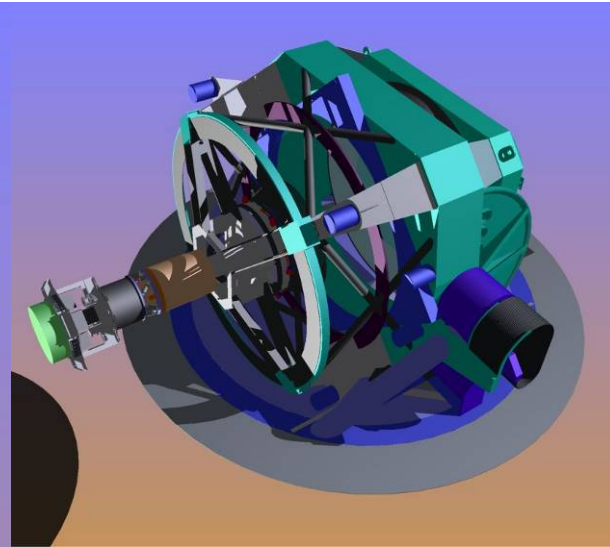
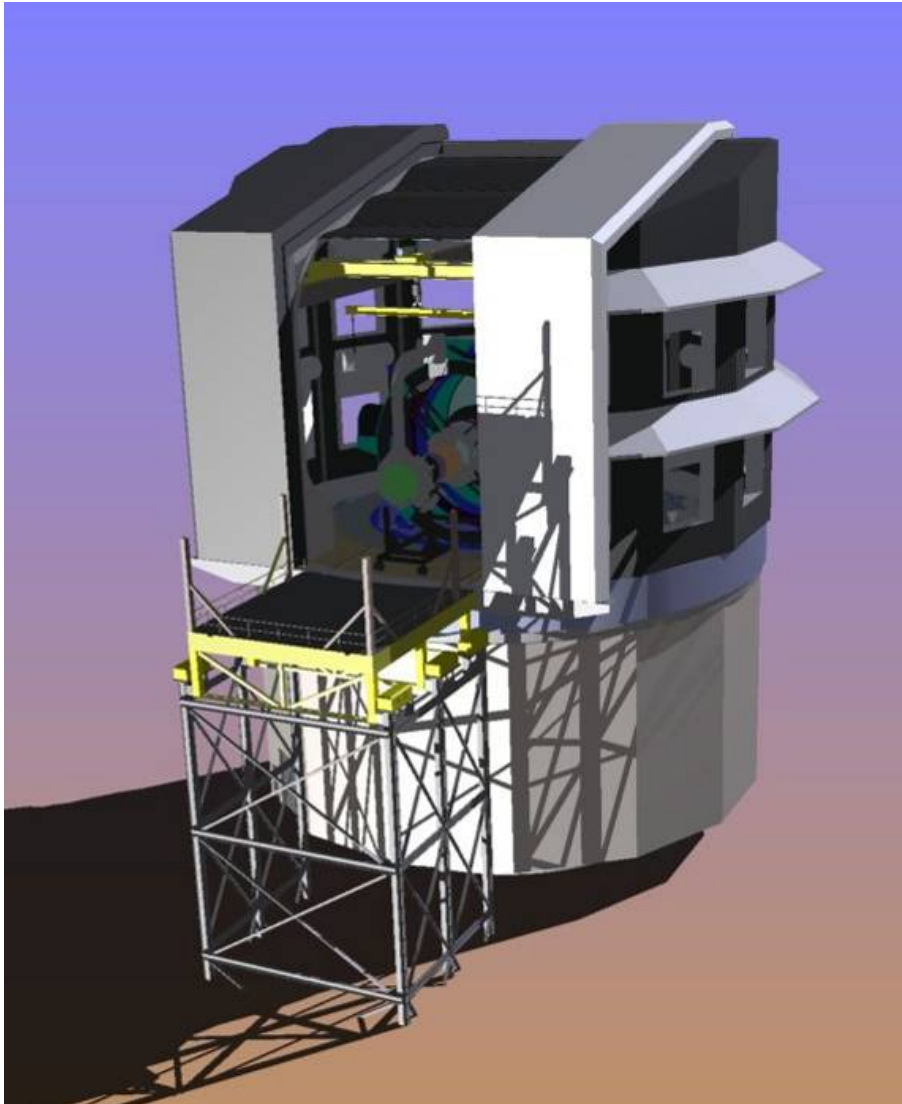
E-ELT Project: Preliminary design Phase



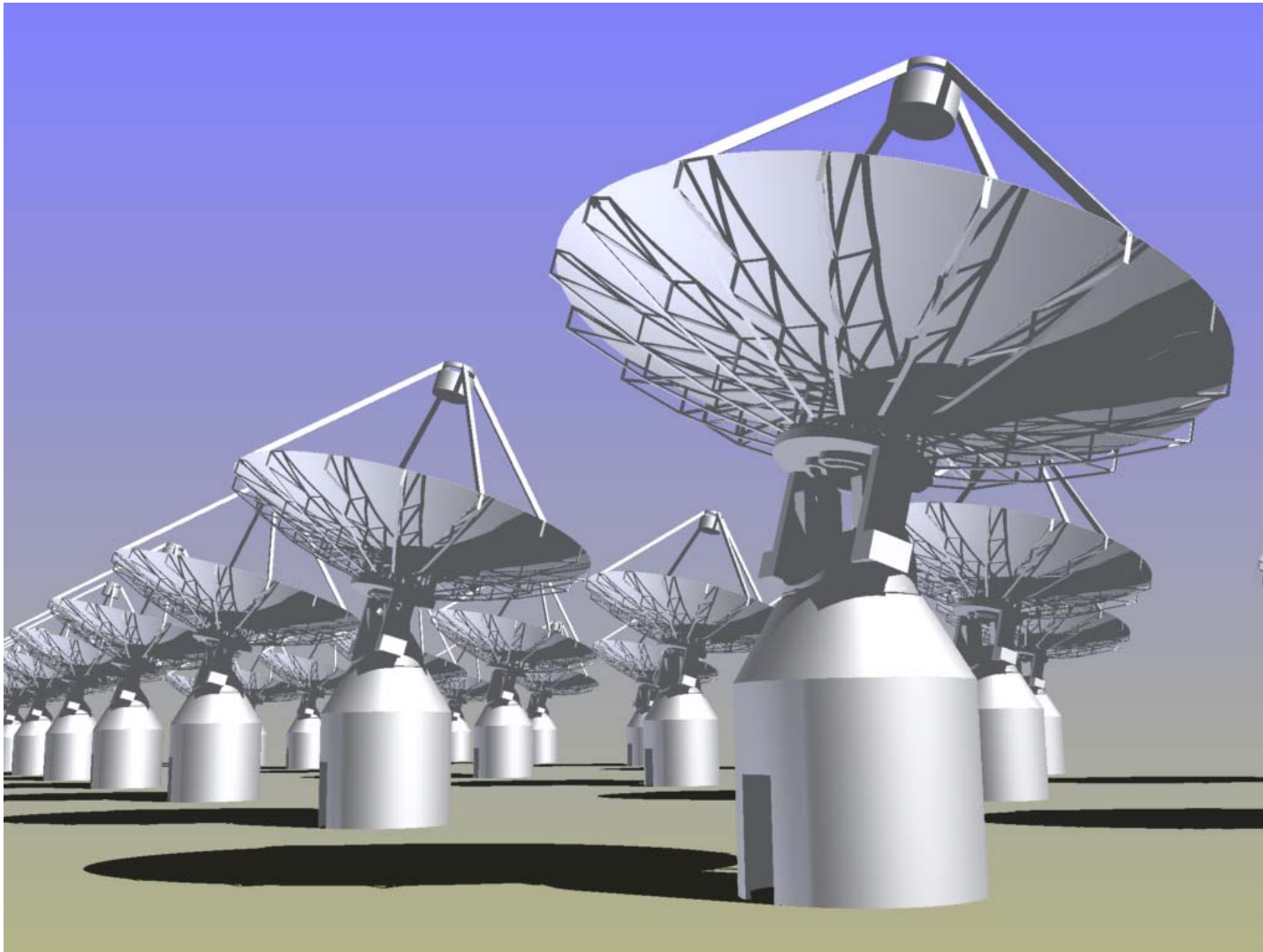
LSST Project



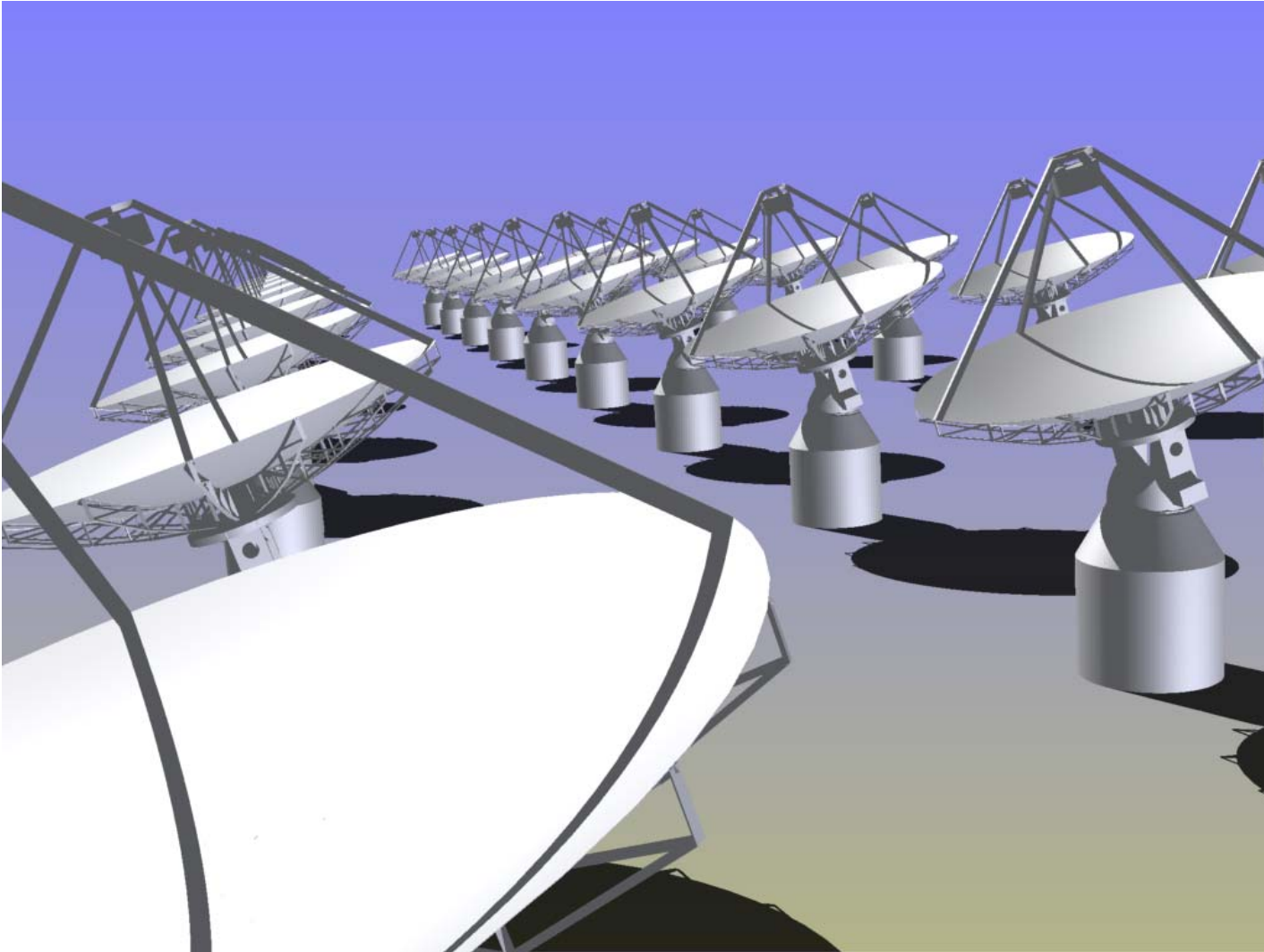
LSST Project



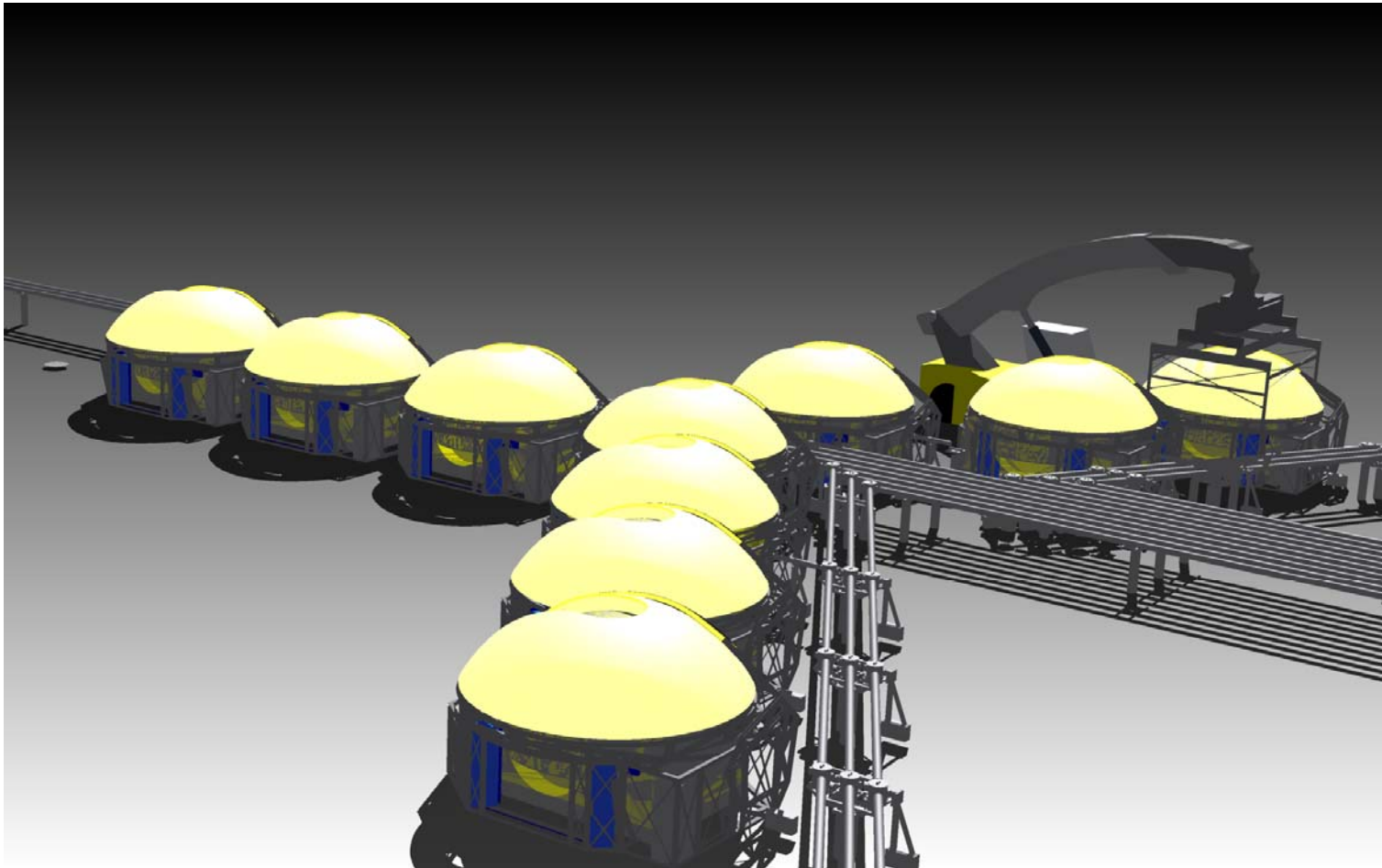
ASKAP Project



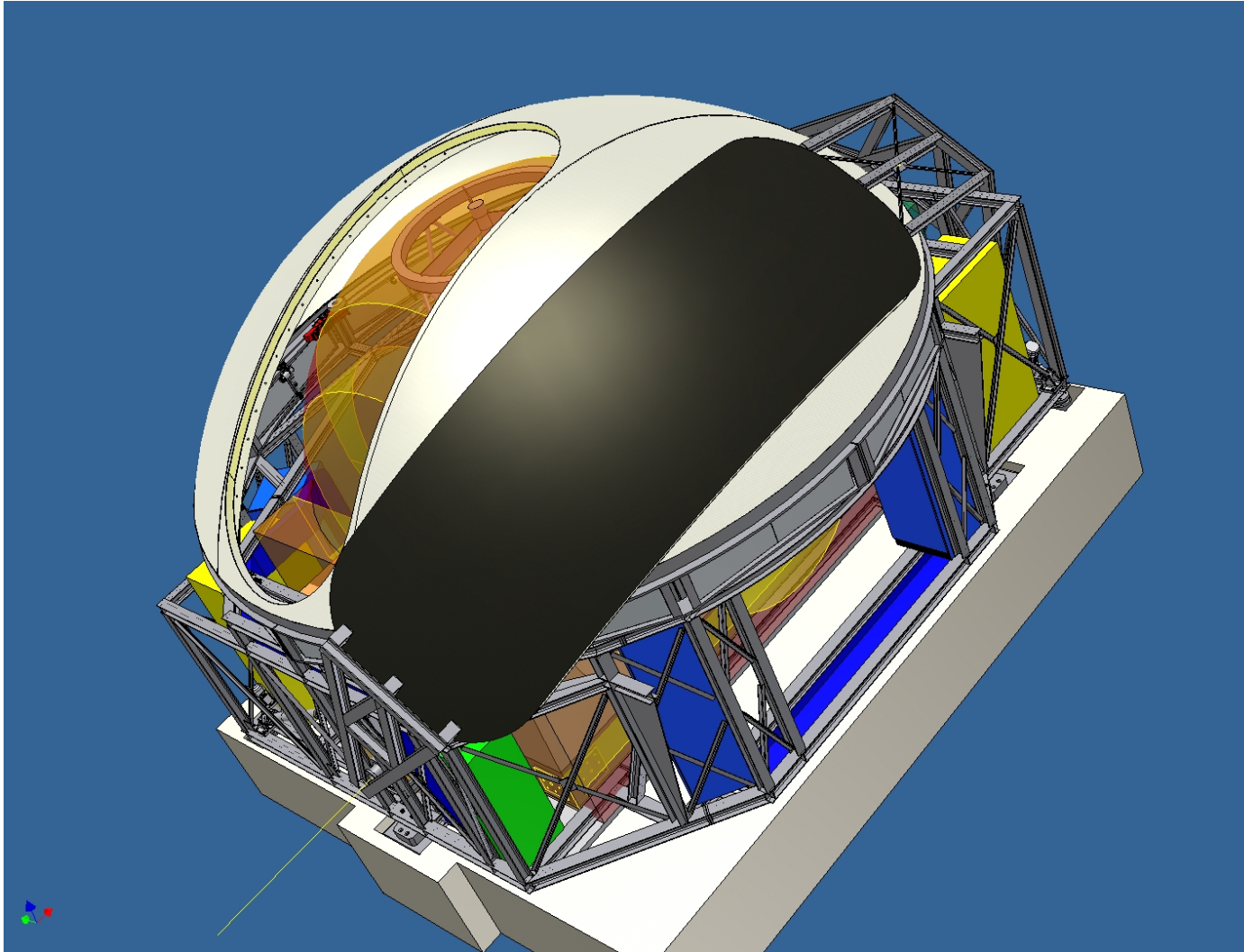
ASKAP Project



MRO Project



MRO Project



EIE in Antarctica

- Feasibility Study for Radio Antenna Installation at "DOME C"
- Preliminary Study for the South Pole Telescope (SPT)
- Conceptual Design for ELT Installation in Antarctica

